

3 Bedroom

Tennyson Avenue, Hull, HU5 3TW

£169,950



- WELL PRESENTED TRADITIONAL PROPERTY • FULL OF CHARACTER • BRIGHT AND SPACIOUS • IMPRESSIVE BAY WINDOWED THROUGH LOUNGE • SPACIOUS KITCHEN DINING ROOM • INTEGRATED APPLIANCES • DOUBLE GLAZING • GAS CENTRAL HEATING SYSTEM • MUST BE VIEWED





### 3 Bedroom Terraced House

£169,950

Tennyson Avenue, Hull, HU5 3TW

Home Estates are pleased to offer to the market this well presented and generously proportioned traditional mid terrace house with lots of character. Internal viewing is absolutely essential in order to appreciate the size and standard of the accommodation on offer.

This is a lovely family home with bright and spacious accommodation which is arranged to two floors. The bright and spacious accommodation briefly comprises of an entrance hall which extends through to an impressive bay windowed through lounge with a spacious dining area. The Kitchen is a well planned domestic preparation area with space for informal dining or a sofa area. The Kitchen has an attractive range of units which are further complemented with coordinating fixtures and fittings and integrated appliances. Full width bi-fold doors provide lovely views and access to the rear patio and gardens beyond.

To the first floor there are 3 bedrooms and a family bathroom with a 3-piece suite and soft contrasting tiled surround.

Outside to the rear is a patio/seating area, the garden is mainly laid to lawn with flower and shrub borders inset.

Additionally this appealing property further benefits from a gas central heating system, double glazing, block paved double off-road parking space or hard standing to the front of the property.

Internal viewing is not only highly recommended but is essential in order to appreciate the size and standard of the accommodation on offer.

## Location

Tennyson Avenue is a highly regarded residential area close to the Avenues conservation area, with a wealth of amenities within walking distance - practically on the doorstep!

The area is well served with all amenities much needed for day to day living with local shopping centres, sought after schools, colleges and academies, regular public transport links in and out of the city, a library and a doctor's surgery.

The University of Hull is also just around the corner along the neighbouring Cottingham Road.

For those who enjoy socialising with friends and family there are many multi cultural cafe bars and restaurants to chose from.

## Property Description

### Ground Floor

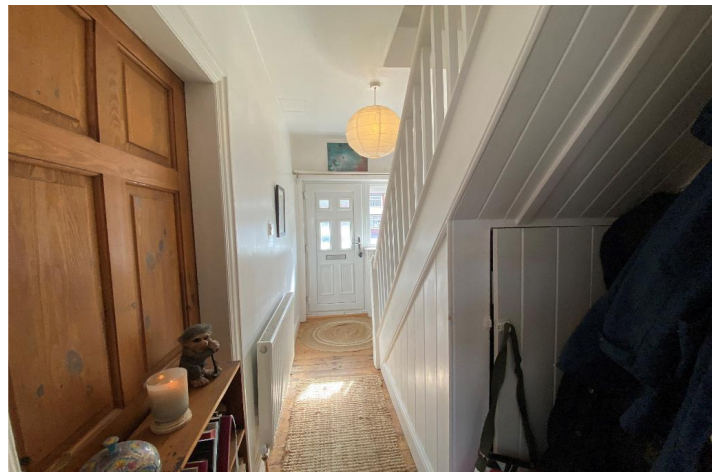
**Entrance Door** - Double glazed front entrance door with matching side screen window leads through to the entrance hall:

**Entrance Hall** - Spindle staircase off to the first floor. Under stairs cloaks/recess meter cupboard. Radiator. Solid panel wood flooring.

**Rear Sitting Room or Dining Room** - 16' 6" x 11' 11" (5.05m x 3.65m) Extremes to extremes. (with an open arch through to the Lounge) Double glazed bay window with aspect over the front garden area and further double glazed window with aspect over the rear garden area. To the Rear Sitting room there are built in shelving to the recess. Coving. Radiator. Solid panel wood flooring. An arched opening leads through to the bay windowed lounge...

**Bay Windowed Lounge** - 13' 11" x 10' 11" (4.26m x 3.35m) Extremes to extremes. Modern fireplace with arched back and grate housing a coal effect living flame gas fire and matching hearth. Wall mounted storage shelving to recess. Radiator. Solid panel wood flooring.

**Dining Kitchen** - 19' 4" x 30' 6" (5.91m x 9.3m) Extremes to extremes narrowing to 7' 7" (2.34m)



Double glazed triple bifold doors looking out over the rear patio and gardens beyond.  
 Range of matching base, drawer and wall mounted units with a roll edge laminate work surface housing a ceramic, one-and-half bowl single drainer sink unit and mixer tap over.  
 Space for a cooker with a tiled splash back surround.  
 Wall mounted gas central heating boiler.  
 Space for upright fridge/freezer.  
 Space for breakfast table or sofa.  
 Fitted skylight window.  
 Radiator.  
 Laminate flooring.



## First Floor

**First Floor Landing** - Spindle rail enclosure.  
 Loft hatch through to the roof void with a pull down ladder, power and light and the loft is boarded for storage.

**Bedroom One** - 14' 5" x 9' 11" (4.41m x 3.04m) Extremes to extremes plus recess.  
 Double glazed bay window with aspect over the front garden area.  
 Built in storage cupboard.  
 Coving.  
 Radiator.

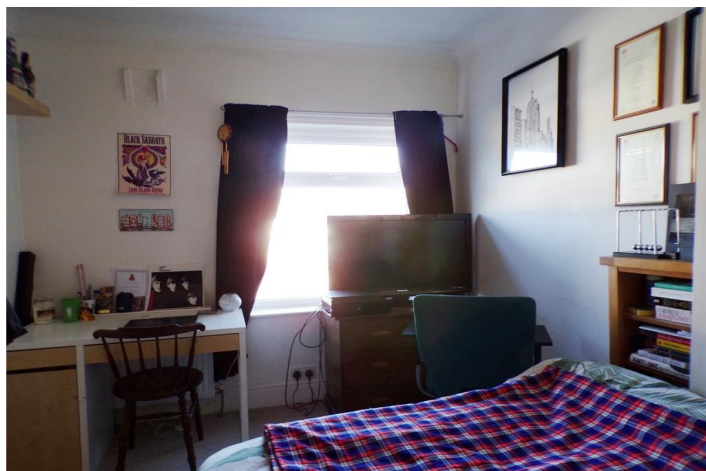


**Bedroom Two** - 11' 11" x 8' 5" (3.65m x 2.59m) Extremes to extremes.  
 Double glazed window with aspect over the rear garden area.  
 Built in storage cupboard with overhead storage cupboard.  
 Coving.  
 Radiator.



**Bedroom Three** - 8' 10" x 7' 7" (2.71m x 2.34m) Extremes to extremes.  
 Double glazed window with aspect over the rear garden area.  
 Coving.  
 Radiator.

**Family Bathroom** - White 3-piece suite comprising of a panel bath, wall mounted wash hand basin and low flush W.C. all with a contrasting tiled surround.  
 Chrome effect shower attachment over the bath.  
 Chrome fittings to the sanitary ware.  
 Classic style radiator/towel rail.  
 High gloss ceiling with recessed downlighting.  
 Laminate flooring.



## Exterior

**Rear Garden** - Outside to the rear is a flagstone patio/seating area. The garden is mainly laid to lawn with flower and shrub borders all enclosed with a high level timber perimeter and boundary fence.

Gardeners shed is inset within the rear.

A further gardeners shed is inset to the perimeter.

**Front Garden** - The front garden area has been laid with block and brick paving for ease of maintenance and further to create a multi off road parking space or hard standing area.

Council tax band: B

Energy Efficiency Rating			
Score	Energy rating	Current	Potential
92+	A		
81-91	B		84   B
69-80	C		
55-68	D	65   D	
39-54	E		
21-38	F		
1-20	G		

MONEY LAUNDERING REGULATIONS 2017: Intending purchasers will be asked to produce identification documentation at a later stage and we would ask for your co-operation in order that there will be no delay in agreeing the sale. General: While we endeavour to make our sales particulars fair, accurate and reliable, they are only a general guide to the property and, accordingly, if there is any point which is of particular importance to you, please contact the office and we will be pleased to check the position for you, especially if you are contemplating travelling some distance to view the property. Measurements: These approximate room sizes are only intended as general guidance. You must verify the dimensions carefully before ordering carpets or any built-in furniture. Services: Please note we have not tested the services or any of the equipment or appliances in this property, accordingly we strongly advise prospective buyers to commission their own survey or service reports before finalising their offer to purchase. These particulars are thought to be materially correct though their accuracy is not guaranteed and they do not form part of any contract. All measurements are approximate and we have not tested any fitted appliances, electrical or plumbing installation or central heating systems.

