

3 Bedroom Terraced House

Sandringham Street, Hull, HU3 6EA

£124,950



- PERFECT STARTER HOME • OR INVESTMENT PROPERTY • DUAL ASPECT LOUNGE/DINING AREA •
- 3 DOUBLE BEDROOMS • NEWLY FITTED MODERN SHOWER ROOM • DOUBLE GLAZING • NO CHAIN INVOLVED • MUST BE VIEWED





3 Bedroom Terraced House

£124,950

Sandringham Street, Hull, HU3 6EA

This is a perfect opportunity to acquire a generously proportioned traditional property, which is perfectly placed for all amenities.

Whilst the property would benefit from a degree of updating, there is great potential to create a lovely family home or investment property.

The generously proportioned property is arranged to 2 floors and briefly comprises of an entrance hall, dual aspect through lounge with a dining area and a very spacious dining kitchen.

To the first floor, there are 3 double bedrooms and a recently refurbished modern shower room with a 3-piece suite.

Outside to the rear is an attractive garden with well stocked and mature plants, flowers and shrubs with a spacious patio/seating area inset. There's also a gardener shed inset to the rear boundary.

Additionally, the property further benefits from double glazing.

The property is offered with vacant possession on completion and with no chain involved.

Internal viewing is recommended in order to appreciate the size and potential this property has to offer!

Location

Sandringham Street is ideally located for all amenities, much needed for day-to-day life.

The area is also well served with busy local shopping centres and retail parks, with many High street stores and supermarkets to choose from. Regular public transport links create easy access to the city centre including the Paragon road and rail interchange.

The Hull Royal Infirmary is just minutes away from the property.

There are also reputable schools nearby for those with a growing family.

For those wishing to spend leisure time, nights out with friends and family, there are many public houses and restaurants to choose from.

Other amenities include a post office, library and a health centre.

Also, easy access to the MKM Stadium.

Property Description

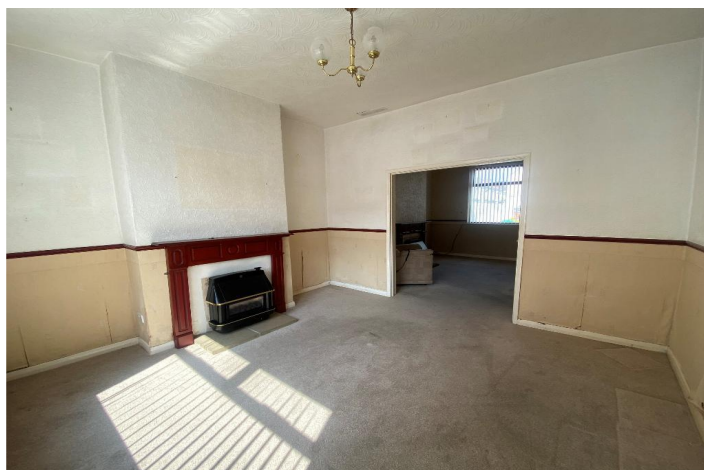
Ground Floor

Entrance - Double glazed front entrance door with overhead screen window leads through to the entrance hall.

Entrance Hall - Spindle staircase off to the first floor.
Mid level dado rail.
Cornice.
Arched corbels.
Laminate flooring.

Through Lounge/Dining Area - 25' 7" x 12' 10" (7.8m x 3.93m) Extremes to extremes.
Dual aspect with an arched divide.
Sealed unit double glazed window with aspect over the front forecourt area and double glazed window looking out over the rear garden area.
To the lounge area there is a fireplace with a floor standing coal effect gas fire on a hearth.
Mid level dado rail.
To the dining room there is also a fireplace with a floor standing coal effect gas fire on a hearth.
Mid level dado rail.
Ceiling rose.

Kitchen - 20' 6" x 8' 4" (6.27m x 2.55m) Extremes to extremes.
Double glazed windows with aspect over the rear courtyard area.
Range of base and drawer units.



Built-in single drainer sink unit with the splash back surround.
 Built-in breakfast bar with overhead storage units.
 Space for cooker.
 Space for dining table.
 Wall mounted hot water heater.
 Under stairs meter cupboard.
 Laminate flooring.

First Floor

Landing - Split level with a spindle rail enclosure.
 Mid level dado rail.

Bedroom One - 15' 4" x 12' 2" (4.7m x 3.71m) Extremes plus recess to extremes.
 Double glazed windows with aspect over the front forecourt area.
 Built-in single storage cupboard.
 Ceiling rose.

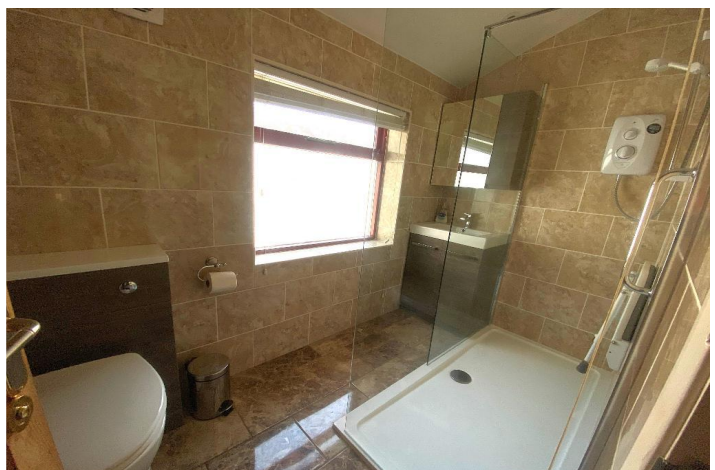
Bedroom Two - 12' 10" x 9' 10" (3.92m x 3.02m) Extremes to extremes plus recess.
 Double glazed window with aspect over the rear garden area.
 Built-in single storage cupboard.
 Ceiling rose.
 Loft hatch through to the roof void.

Bedroom Three - 11' 4" x 8' 5" (3.47m x 2.59m) Extremes to extremes.
 Double glazed window with aspect over the rear garden area.

Shower Room - 3-piece suite comprising of a double walk-in shower enclosure, built-in vanity wash hand basin with storage space beneath and matching cabinet over and built-in low flush W.C.
 Chrome fittings to the sanitary ware.
 Contrasting tiled splash back surround.
 Recessed down lighting.
 Extractor fan.
 Chrome effect electric towel rail/radiator.
 Coordinating high gloss ceramic tiled flooring.

Exterior

Rear Garden - Outside to the rear is a spacious patio/seating area and a courtyard area which has been laid for ease of maintenance and enclosed with a high level boundary wall.
 Low cottage style timber fence divide, which leads to the main garden area.
 Main garden area has been laid with fine stone pebbles



for ease of maintenance.

There is a further paved patio/seating area to the rear.

The garden also has a high level timber perimeter fence and there are flower and shrub borders inset to the garden.

There is also a gardener shed in set to the rear boundary which is enclosed with a high level timber boundary fence and matching access gate.

External water supply.

Council tax band: A

Score	Energy rating	Current	Potential
92+	A		
81-91	B		85 B
69-80	C		
55-68	D	59 D	
39-54	E		
21-38	F		
1-20	G		

MONEY LAUNDERING REGULATIONS 2017: Intending purchasers will be asked to produce identification documentation at a later stage and we would ask for your co-operation in order that there will be no delay in agreeing the sale. General: While we endeavour to make our sales particulars fair, accurate and reliable, they are only a general guide to the property and, accordingly, if there is any point which is of particular importance to you, please contact the office and we will be pleased to check the position for you, especially if you are contemplating travelling some distance to view the property. Measurements: These approximate room sizes are only intended as general guidance. You must verify the dimensions carefully before ordering carpets or any built-in furniture. Services: Please note we have not tested the services or any of the equipment or appliances in this property, accordingly we strongly advise prospective buyers to commission their own survey or service reports before finalising their offer to purchase. These particulars are thought to be materially correct though their accuracy is not guaranteed and they do not form part of any contract. All measurements are approximate and we have not tested any fitted appliances, electrical or plumbing installation or central heating systems.

